



EMBROIDERY STUDIO  
*Creative by nature. Efficient by design.*



## Wilcom EmbroideryStudio e4.0N Update 1

### Release Notes

**09 June 2017**

This file contains notes on the Wilcom EmbroideryStudio e4.0N Update 1 release. This update is intended for installation with any released version (already installed) of Wilcom EmbroideryStudio e4.0. It contains all improvements up to this release.

**Note:** Administrative privileges are required to install the software update. If you are installing to a corporate network, an administrator password may be required during update installation.

# Contents

Improvements with ES e4.0N Update 1 .....	1
Design Library improvements .....	1
New from Selected in Design Library .....	1
Design library refresh .....	1
Pressing backspace in search .....	1
Searching for non-native files .....	2
Order information .....	2
Browsing the network for large files .....	2
Design Library crashes .....	2
Lettering improvements .....	2
Zigzag with lettering .....	2
Character display .....	3
Non-existent character display .....	3
3D Futuro embroidery font .....	3
Recommended letter heights .....	3
Teamname improvements .....	4
Adding columns to the members list .....	4
Teamname letter spacing .....	5
Importing teamname lists with additional fields .....	5
Manage Teams button .....	5
File export for team names .....	6
Design shifts when saving team names .....	7
Adding lettering art to team names .....	7
Stitching improvements .....	7
Flexi-split with complex fill objects .....	7
Stitch angles .....	8
Visualization improvements .....	8
Stitch Player works with ZSK .....	8
Viewing bling .....	8
Reshaping objects on a 4K screen at 200% scaling .....	8
Usability improvements .....	8
Color palette scrolling .....	8
Product registration .....	9
Kiosk locking .....	9
Kiosk controls after exiting Kiosk mode .....	9
Scrolling through items in Product Visualizer .....	9
PDF printing .....	9
Graphics handling improvements .....	10
CorelDRAW X8 64-bit installation in Graphics mode .....	10
Undoing bitmap modifications .....	10
Undo actions between Wilcom Decoration and CorelDRAW Graphics .....	10
File handling improvements .....	10
Hatch e3.6 file format .....	10
Automatic machine file naming .....	10
Language improvements .....	11
Pique polo in Spanish interface .....	12
Application crashes when saving user-refined letters .....	12
System improvements .....	12
Icons in the Object Properties docker .....	12
Color changes with Colorway Editor docker .....	12
Generic Write Error .....	12
CorelDRAW in ES dockers .....	13
Using high-end Wacom tablets .....	13
Application crashes with packaged teamname sample designs .....	13
Failure to create empty document .....	13
Communications with the Happy Voyager machine .....	13
Internal Envelope Error .....	13
Assistance .....	14
Contact .....	14
Copyright .....	14

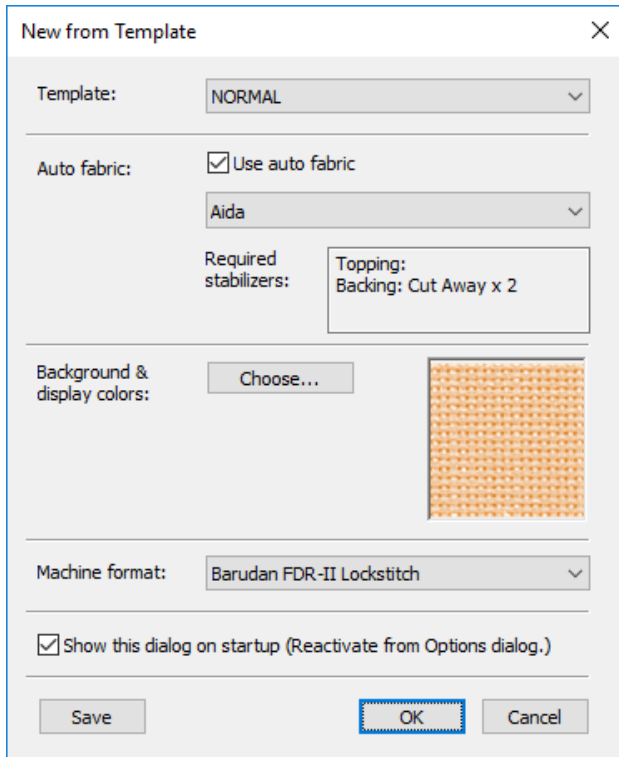
## Improvements with ES e4.0N Update 1

The ES e4.0 Update 1 software update enhances and corrects a number of problems, already existing or introduced with previous updates.

### Design Library improvements

#### New from Selected in Design Library

The 'New from Template' function has been incorporated into the Design Library for greater productivity.



In Design Library, the tool creates a new design based on a selected design or image. It uses whatever template is current and works for single or multiple selections. Right-clicking the button allows you to select a different template. The new template selection is remembered during the current session and will be used the next time the command is invoked.

#### Design library refresh

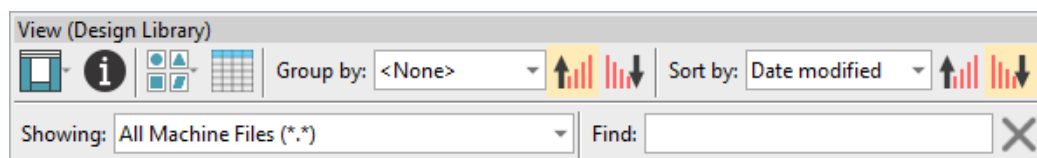
The Design Library display can now be refreshed with a simple 'F5' keypress, the same as Windows Explorer.

#### Pressing backspace in search

Previously, holding the Backspace key to clear a search would jump the cursor to the beginning of the field without deleting the text. This problem has been rectified.

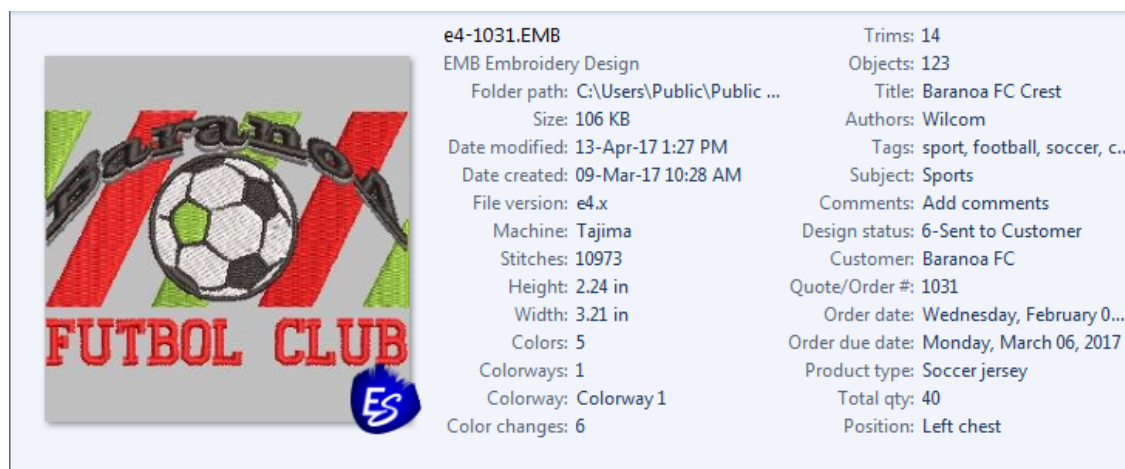
## Searching for non-native files

Searching for machine files does not always yield correct results. Problems have also been reported when searching for ART and T0? files. A related issue has been the mismatching status of the 'Showing' field. These problems have been rectified.



## Order information

A problem has occurred with missing order information in the Details pane. This has been rectified.



## Browsing the network for large files

Problems have occurred with abnormal loading when browsing through network folders containing large files. This has been rectified.

## Design Library crashes

Design Library crashes have been reported while carrying out routine operations such as:

- Editing properties in the Design Properties docker. For instance, updating design status in the Details pane and/or Design Properties pane and then saving.
- The Preview pane can cause the software to crash when selecting a design file while thumbnails are being generated.
- Also reported – application crashes when moving images from one folder to another.

These problems have been rectified.

## Lettering improvements

### Zigzag with lettering

Previously, users were unable to apply zigzag stitching to selected lettering via the Stitches toolbar. Zigzag was disabled and could not be selected. This problem has been rectified.

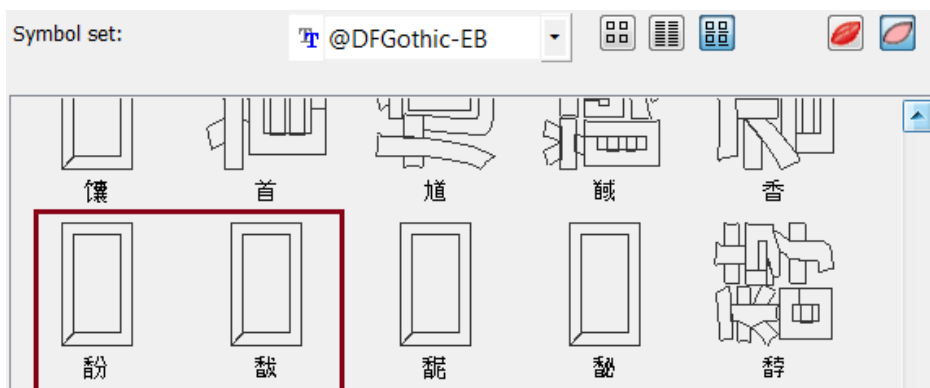


### Character display

Characters are replaced by a ~ character in the Lettering field when they don't appear in the font. Selecting another font causes the lettering object to be completely removed. This problem has been rectified.

### Non-existent character display

In the Insert Symbol dialog, non-existent characters are now displayed as squares and used when inserted into a design. A 'fallback character' is displayed below the blank placeholder character.



**Tip:** If you want to check whether a character exists in a font, copy the fallback character and paste it into an MS Word document. Then try changing fonts until you find one that includes the character.

### 3D Futuro embroidery font

The 3D Futuro embroidery font has been improved and repackaged.



### Recommended letter heights

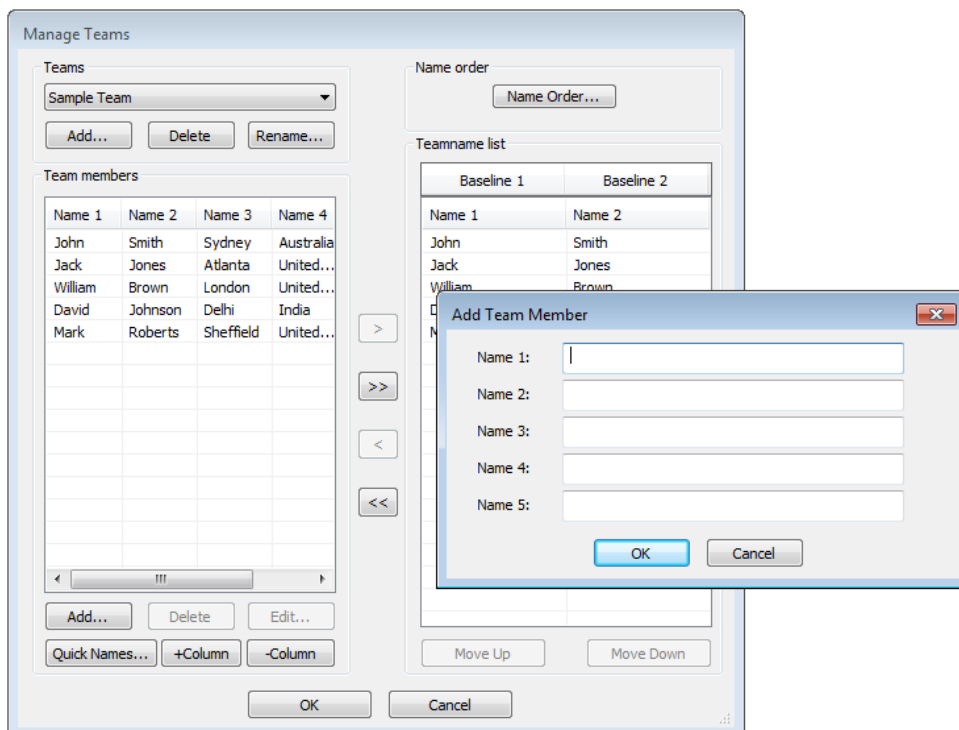
Recommended letter heights for 3D and some other fonts have been reviewed and the user manual updated accordingly.

Font	Sample	Recommended Sizes				Stitch Method
		Min		Max		
		in.	mm	in.	mm	
3D fonts						
3D Block2	<sup>^</sup> <b>ABCDEF abcdef</b> <b>0123456789</b>	0.6	15	1.2	30	AD
3D Brush Script	<sup>^</sup> <i>ABCDEF abcdef</i> <i>0123456789</i>	0.8	20	1.6	40	AD
3D Emphatic	<sup>^</sup> <b>ABCDEF abcdef</b> <b>0123456789</b>	0.8	20	2.4	60	AD
3D Futuro	<sup>^</sup> <b>ABCDEF abcdef</b> <b>0123456789</b>	0.8	20	1.2	30	AD
3D London	<sup>^</sup> <b>ABCDEF abcdef</b> <b>0123456789</b>	0.8	20	1.2	30	AD
<sup>^</sup> New to ESe4						

## Teamname improvements

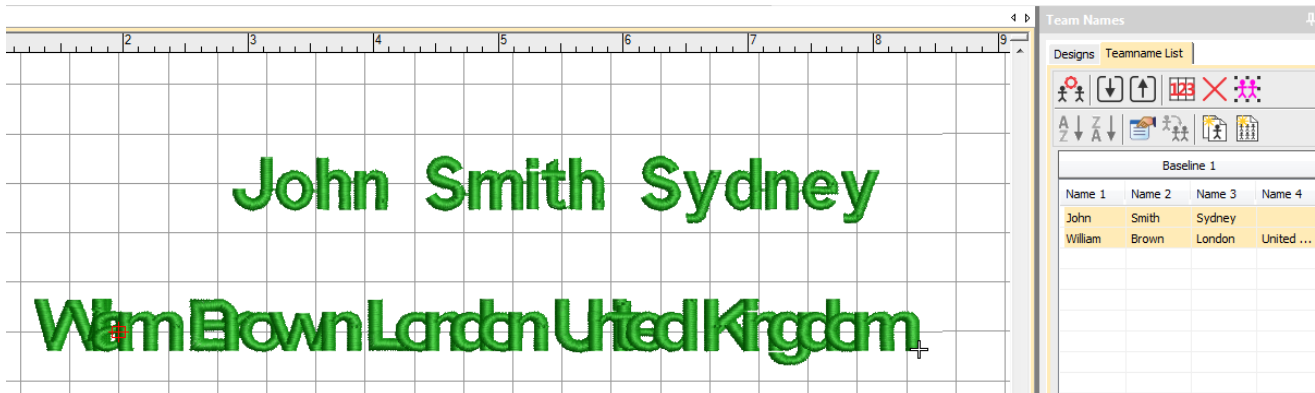
### Adding columns to the members list

There used to be a 10 column limit on the number of team members you could add. You can now add a virtually unlimited number of columns. Note, however, that only the first 100 will be saved.



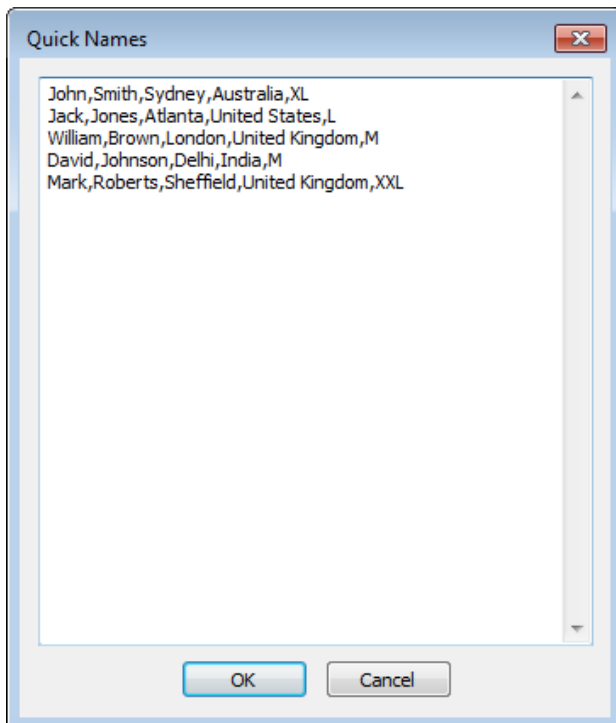
### Teamname letter spacing

Teamname letter spacing issues have been resolved in cases where a design contains different numbers of names.



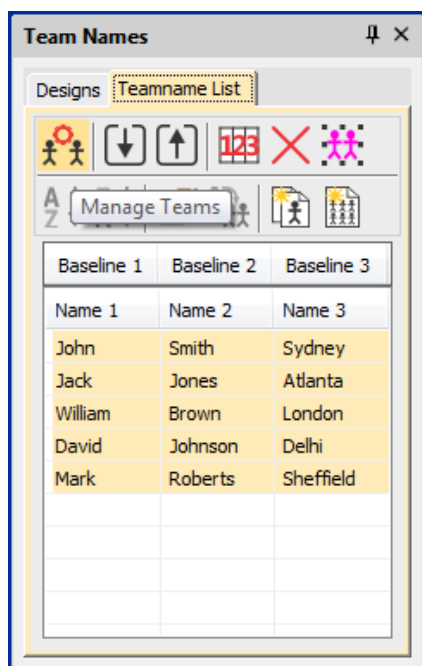
### Importing teamname lists with additional fields

A 'size' field is often added to teamname lists even though it does not form part of the design. Instead, this field allows machinists to ensure they are using the right size garment for the specified name. Previously, additional fields were stripped on import. This problem has been rectified.



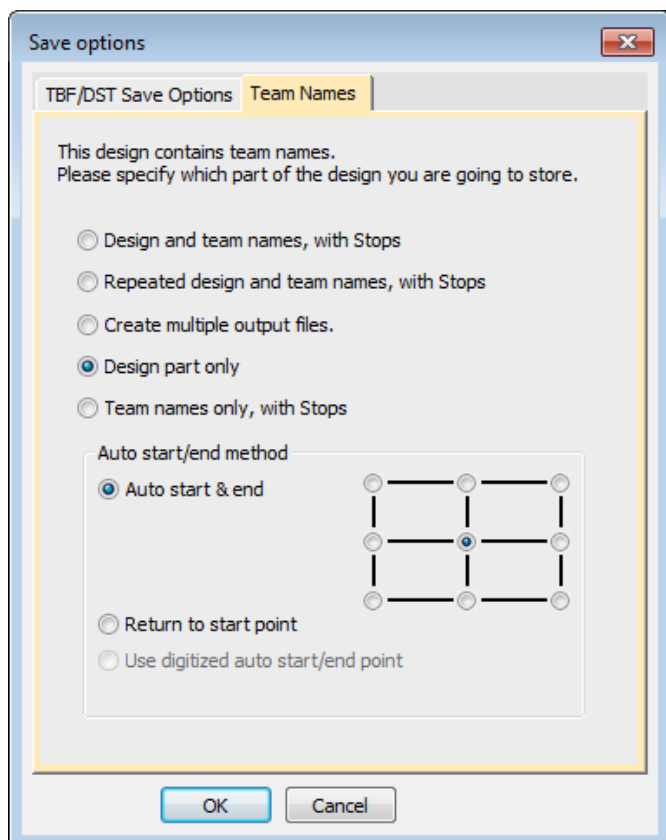
### Manage Teams button

The Manage Teams button should not be selected by default immediately after the Team Names docker is opened. This problem has been rectified.



### File export for team names

The file export dialog for team names now displays correctly.



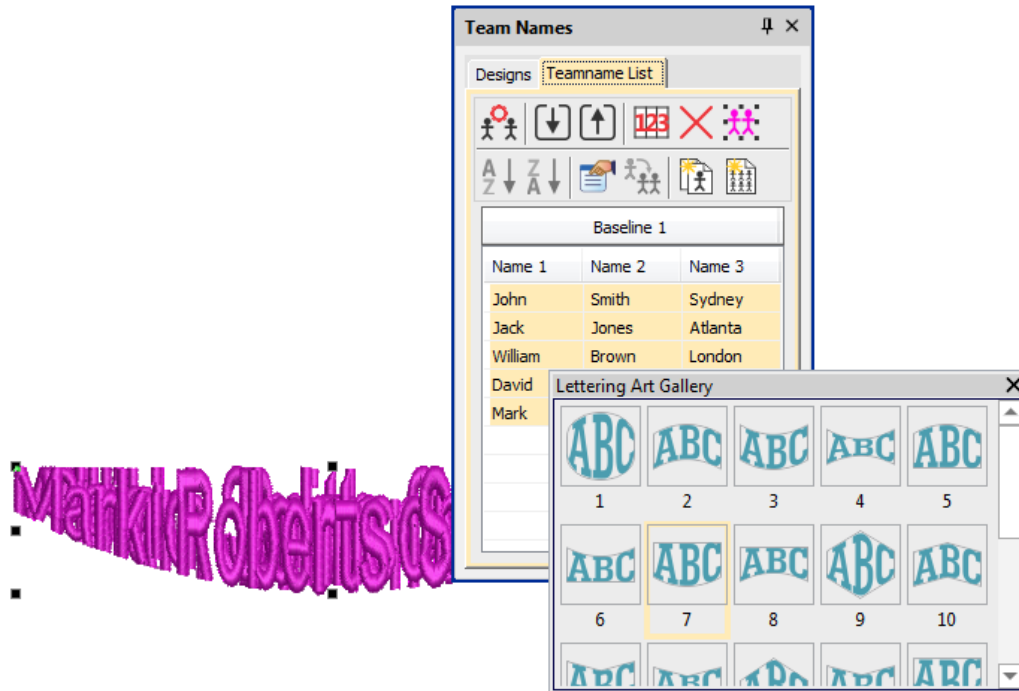


## Design shifts when saving team names

When saving a teamname design with 'Repeated design and team names with Stops' selected, the design gets shifted in the output files. This problem has been rectified.

## Adding lettering art to team names

You can add lettering art to teamname objects from lettering properties accessed via the teamnames docker. Problems have been reported where lettering art is applied but then lost. This issue has been rectified.



## Stitching improvements

### Flexi-split with complex fill objects

Currently flexi-split effect is used mainly with satin stitch. It could always be applied to tatami Input A objects. It can now be applied to complex fill tatami objects.



**Note:** Flexi-split is applied to each 'segment' of a complex fill as shown above.

## Stitch angles

Problems have been reported when adding stitch angles to embroidery objects. When creating complex fill objects with holes, the Stitch Angles tool is disabled. Also, adding stitch angles to closed shapes always results in Input A/B objects rather than Complex Turning. These problems have been rectified.

## Visualization improvements

### Stitch Player works with ZSK

Stitch Player has been enhanced to work with ZSK files. It now provides the option of stopping at color changes in the same way as ZSK (formerly ZANGS) embroidery machines would act.

### Viewing bling

The Show Bling command is currently missing from the Digitizing product level. This problem has been rectified.



### Reshaping objects on a 4K screen at 200% scaling

A number of issues have been reported when reshaping objects on a 4K screen at 200% scaling:

- Unable to reshape a manual or manual triple run object. Node points are not shown.
- Unable to reshape an individual motif dropped with Use Motif.
- Unable to reshape a manual sequin object.

These problems have been rectified.

## Usability improvements

### Color palette scrolling

In instances where the color palette is full, you need to click the spin box to scroll through the available colors. Previously, the palette reverted to first position when you start digitizing. It now remains at the current color slot. This allows you to easily select nearby colors.

**Tip:** You can always float the color palette to display the full range of colors (max 128). This is more practical when using a high resolution (4K) monitor or second monitor.

## Product registration

There have been requests to include a 'Product Registration' option in the Help menu. This has now been added to allow users to both register their product and/or check its current status. If already registered, it will display your current serial number and dongle tag number. If not registered, it will walk you through the process.

## Kiosk locking

Some related issues are causing problems when the Kiosk lock setting is activated in the Options dialog:

- Toolbars are unavailable via the Window > Toolbars menu.
- Opening designs from Design Library invokes the Kiosk instead of the Wilcom Decoration screen.

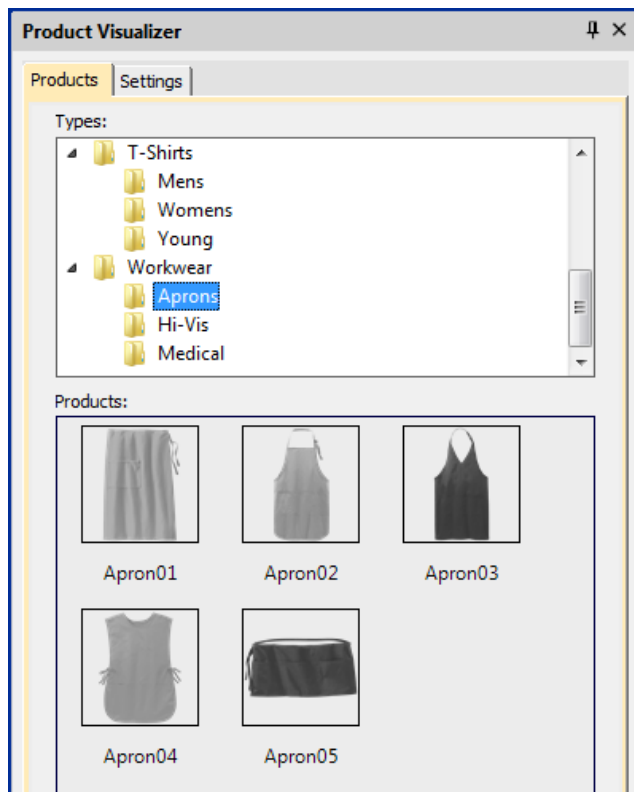
These problems have been rectified.

## Kiosk controls after exiting Kiosk mode

Some Kiosk controls appear in the Wilcom Decoration window immediately after exiting the Kiosk mode. This problem has been rectified.

## Scrolling through items in Product Visualizer

The mouse scroll-wheel now works correctly and faster when scrolling through the product listing.



## PDF printing

A number of problems have been reported in relation to PDF printing from the Print Preview window.

- The Print Preview > Print to PDF command ignores the Portrait / Landscape setting. It always creates a portrait display.

- The software reports an error attempting to read the license for the NovaPDF software after a Windows 10 update.
- Similarly, a NovaPDF license error is sometimes reported after starting up the software.

These problems have been rectified.

## Graphics handling improvements

### CorelDRAW X8 64-bit installation in Graphics mode

When switching to CorelDRAW Graphics mode, the software previously warned (erroneously) that CorelDRAW X8 was not installed. This problem has been rectified.

### Undoing bitmap modifications

Problems have been reported when attempting to undo repositioning or transformation of large bitmaps inserted into the software via CorelDRAW Graphics mode. This has been rectified.

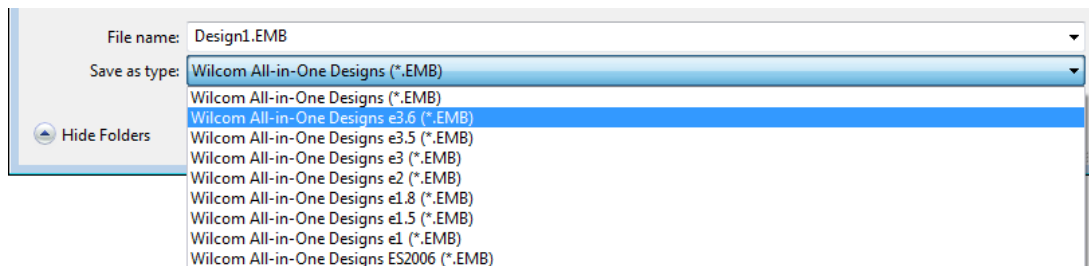
### Undo actions between Wilcom Decoration and CorelDRAW Graphics

Problems have been reported when undoing actions after switching between Wilcom Decoration and CorelDRAW Graphics. These have been rectified.

## File handling improvements

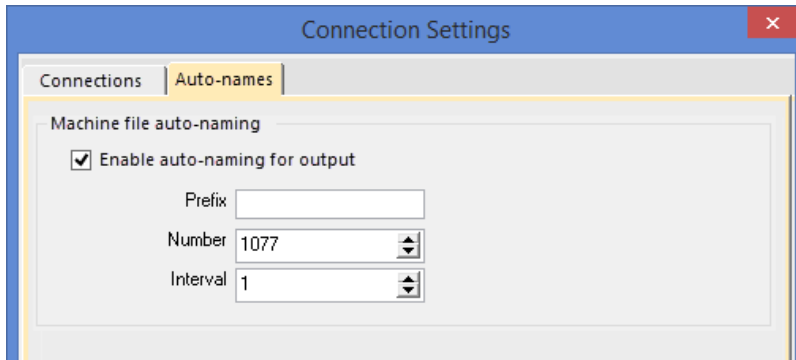
### Hatch e3.6 file format

The latest release allows ES e4 to read and write Hatch EMB e3.6 file format. The list of supported formats now includes:



### Automatic machine file naming

Connection Manager now provides an option for automatic machine file naming. When enabled, the specified filename format will be used for all machine connections established in Connection Manager.



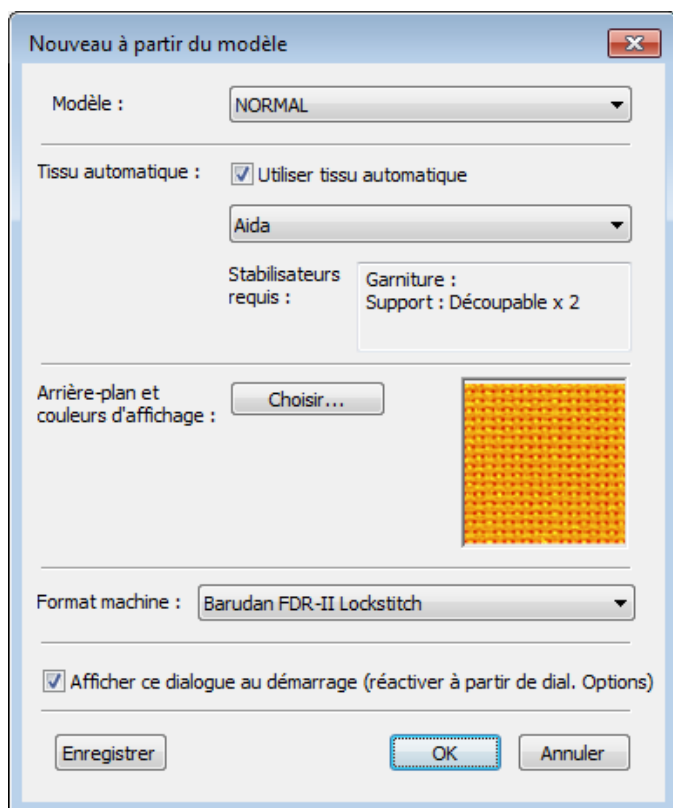
Where:

Filename format	Filenames take the format <prefix><number>.<extension>
Prefix	ASCII only, no unicode characters. No Windows reserved characters. Length limit 8 characters.
Number	Numeric only. Range 1 – 99,999,999.
Interval	Interval is numeric only and is the amount the number is incremented each time a file is generated. Range is 1 – 99.

**Note:** When enabled, Kiosk will also use this auto-name specification for all machine files. If not enabled, it will use the kiosk machine file definition.

## Language improvements

Truncation problems in some dialogs have been reported in languages other than English. These have been rectified.



### Pique polo in Spanish interface

In Spanish language, the fabric type 'pique polo' was missing from the auto-fabric settings. This problem has been rectified.

### Application crashes when saving user-refined letters

There have been reports of application crashes when saving a user-refined letter in German or French interfaces. This issue has been rectified.

## System improvements

### Icons in the Object Properties docker

Incorrect icons have appeared in the Object Properties docker when not all options are enabled. This problem has been rectified.

### Color changes with Colorway Editor docker

Problems have occurred when clicking a color in the Colorways list of the Colorway Editor docker. Any selected object's color incorrectly changes. This problem has been rectified.

### Generic Write Error

'Generic Write Errors' have been reported when saving designs incorporating images imported via CorelDRAW Graphics. This problem has been rectified.

### CorelDRAW in ES dockers

Problems have been reported with CorelDRAW 'artefacts' persisting in Wilcom Decoration dockers. These have been rectified.

### Using high-end Wacom tablets

With the initial release of ES e4, the user had to do an extra swipe to obtain a right-click action on high-end Wacom tablets. For example, when creating curve points with a digitizing tool. This problem has been rectified. Input behaviour is as it was in ES e3.

### Application crashes with packaged teamname sample designs

When Team Names Advanced is unavailable, there have been reports of application crashes when opening packaged teamname samples. This problem has been rectified.



### Failure to create empty document

When a Complex Fill object is created and the design saved (EMB or machine file format), a 'Failed to create empty document' is displayed when attempting to create a new design. Also most of the UI is grayed out and the software unusable until restarted. This has been rectified.

### Communications with the Happy Voyager machine

Problems have been reported when downloading design files to the Happy Voyager machine via Machine Manager. A serial error is shown on the machine panel. This problem has been rectified.

### Internal Envelope Error

An Internal Envelope Error has been reported in relation to system security. This problem has been rectified.

## Assistance

If you encounter a problem with the EmbroideryStudio e4.0 software update, refer to the following sources for help:

- Wilcom EmbroideryStudio e4.0 User Manual – select **Help > User Manual**.
- Wilcom EmbroideryStudio e4.0 Onscreen Help – select **Help > Onscreen Help**
- Windows help – select Start > Help and Support
- Windows manual – documentation supplied with your hardware.

If you are unable to solve a problem, you should contact your Wilcom dealer. Before seeking help, check that your PC meets the system requirements, and check the Troubleshooting chapter of the User Manual.

## Contact

If you have any questions, please contact your local Wilcom dealer or distributor in your country.

## Copyright

Copyright © 1990-2017 Wilcom Pty Ltd, Wilcom International Pty Ltd. All rights reserved.

No parts of this publication or the accompanying software may be copied or distributed, transmitted, transcribed, stored in a retrieval system or translated into any human or computer language, in any form or by any means, electronic, mechanical, magnetic, manual, or otherwise, or disclosed to any third party without the express written permission of:

Wilcom Pty Ltd. (A.B.N. 62 062 621 943)  
Level 3, 1-9 Glebe Point Rd, Glebe  
Sydney, New South Wales, 2037, Australia  
PO Box 1094 Broadway NSW 2007  
Phone: +61 2 9578 5100  
Fax: +61 2 9578 5108  
Web: <http://www.wilcom.com>

TrueView™ and Point & Stitch™ are trademarks of Wilcom Pty Ltd. Portions of the imaging technology of this Product are copyrighted by AccuSoft Corporation. The EPS File Import/Export Converter used in this Product is copyrighted by Access Softtek, Inc. All rights reserved.